

## Specifications

Insulation Resistance:	1,000MΩ min. at 500V DC
Dielectric Withstanding Voltage:	700V AC for 1 minute
Contact Resistance:	30mΩ max. at 10mA / 20mV max.
Operating Temperature Range:	-40°C to +150°C
Mating Cycles:	10,000 insertions min.
Contact Force:	20g - 60g per pin
Operating Force:	2.5kg max.
Mating Cycles:	10,000 times

## Materials and Finish

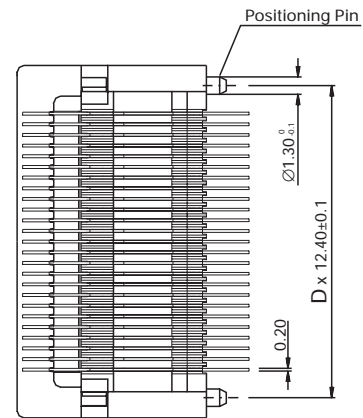
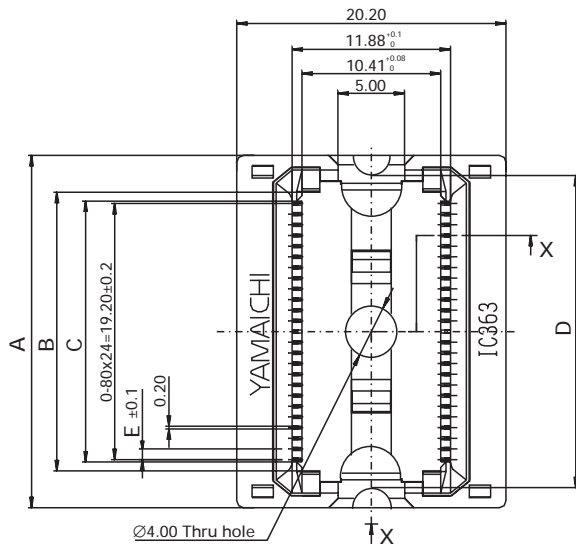
Housing: Polyetherimide (PEI), glass-filled  
 Contacts: Beryllium Copper (BeCu)  
 Plating: Gold over Nickel

## Features

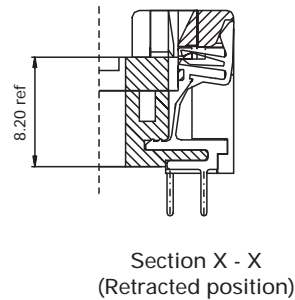
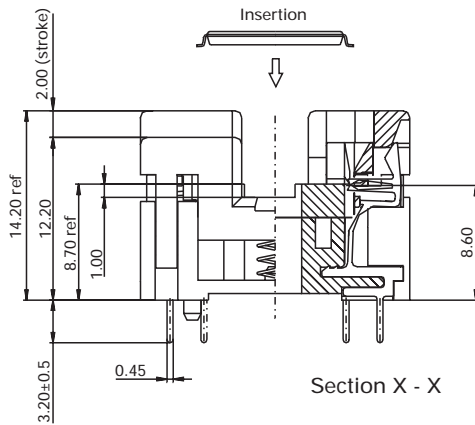
- Open Top low actuation force socket with extremely reliable 2-point contact system

## Applicable Dimensions (Reference Only)

### Outline Socket Dimensions



### Contact Details



## Part Number (Details)

**IC363 - 0\*\* 2 - 00\* \***

Series No.

No. of Contact Pins

Number of Sides with Contacts

Design No.

Positioning Pin:  
 N = Without Positioning Pin  
 P = With Positioning Pin

Part Number	Pin Count	A	B	C	D	E (Pitch)
IC363-0502-001*	50	26.40	20.88	19.56	23.40	0.80
IC363-0542-002*	54	28.00	22.75	21.18	25.00	0.80
IC363-0662-003*	66	28.00	22.92	21.14	25.00	0.65

# IC363 Series (Open Top)

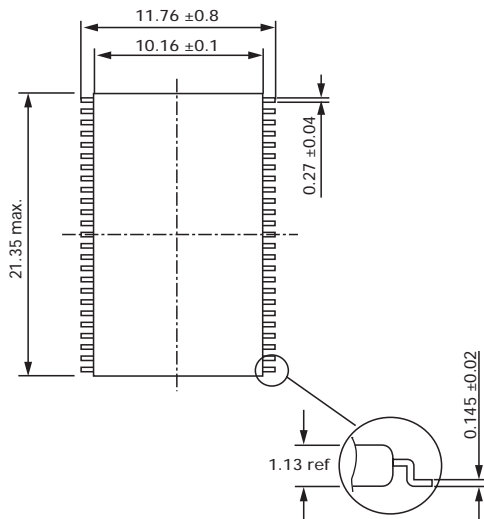
# Thin Small Outline Package (TSOP - type II)

## Recommended IC Dimensions and PCB Layouts (50 to 56 pins)

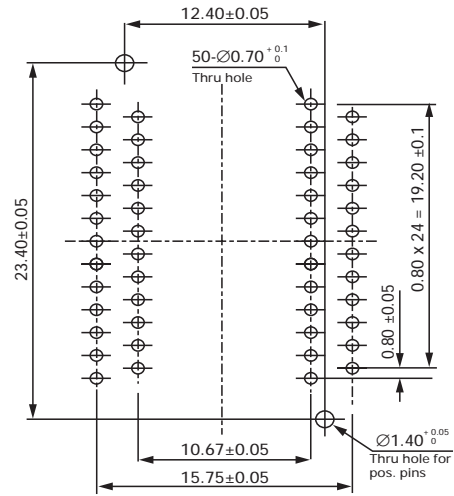
Top view from socket

### 50 pins (TSOP II)

IC363-0502-001\*



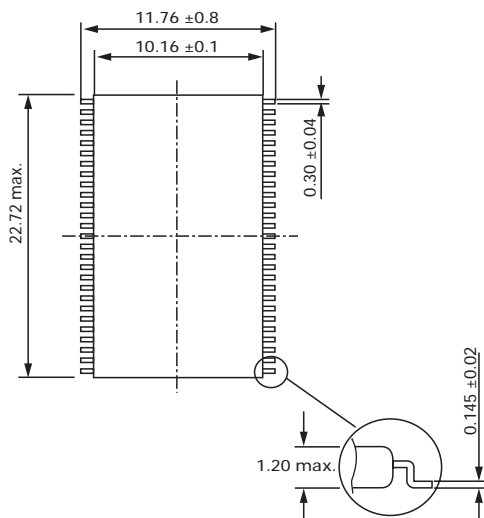
IC Dimensions



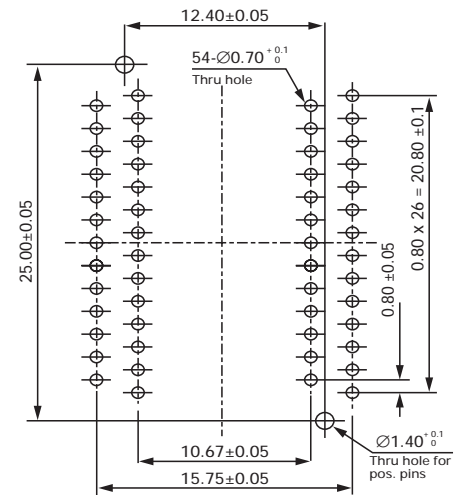
PCB Layout

### 54 pins (TSOP II)

IC363-0542-002\*



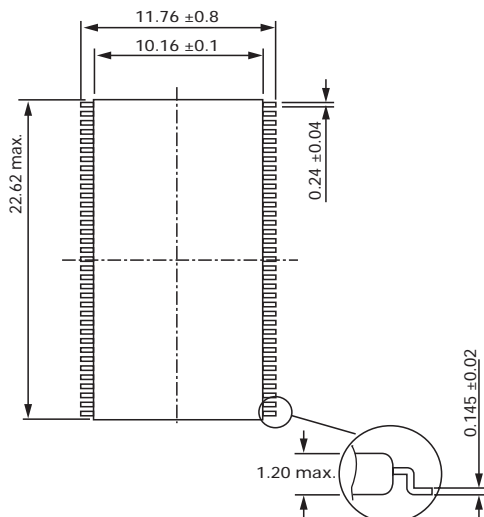
IC Dimensions



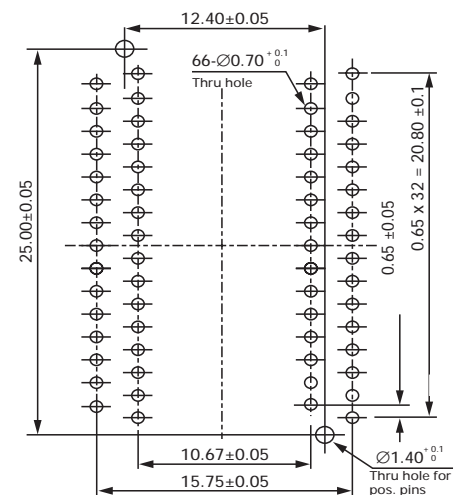
PCB Layout

### 66 pins (TSOP II)

IC363-0662-003\*



IC Dimensions



PCB Layout